

Need



There are around 254,000 adults in Hillingdon



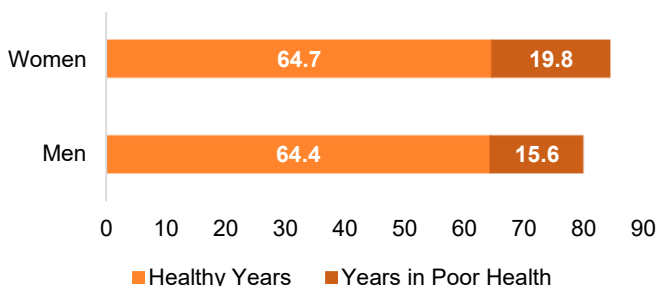
Around 210,000 (83%) are aged 18-64



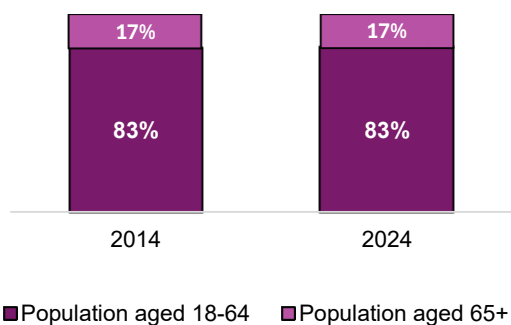
Around 43,000 (17%) are aged 65 and over

Life expectancy for women is 84.5 years, of which 64.7 are expected to be in good health

Life expectancy for men is 80 years, of which 64.4 are expected to be in good health

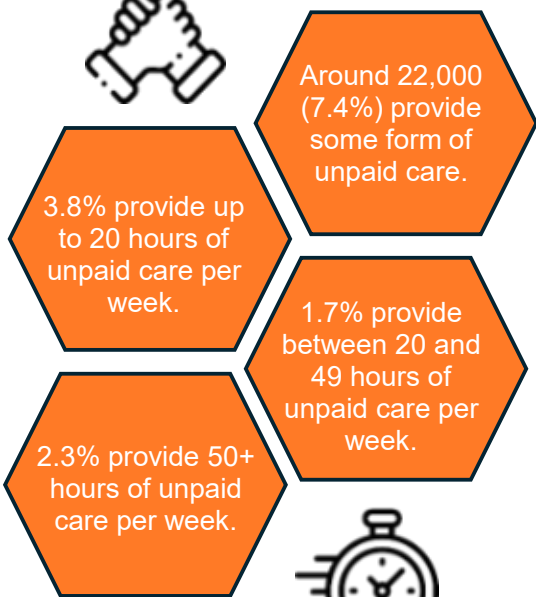


Demographic Breakdown, 2014 vs 2024 - Hillingdon



Around 39,000 adults report long term illness or disability - 12.9% of the population.

Around 12,000 adults report bad or very bad health - 4.0% of the population.



Around 1,000 adults with a learning disability were supported in 2023/24. Around 1,000 (88%) were of working age.

Care Users

People accessing long-term care

At the centre of adult social care are the individuals being supported to live as independently as possible in a safe environment that enhances their wellbeing.



Overall, around 1.5% of the adult population are receiving long-term care, with 76% of those being cared for in the community.



The needs of people needing social care support are becoming more complex

The majority of people continue to be cared for in their homes, many by family and friends with some support from their council

Still, around 3 out of 4 adults age 65+ will face care costs in their lifetime

There are 1,557 care home beds in Hillingdon, a decrease of 0.6% from 2023/24

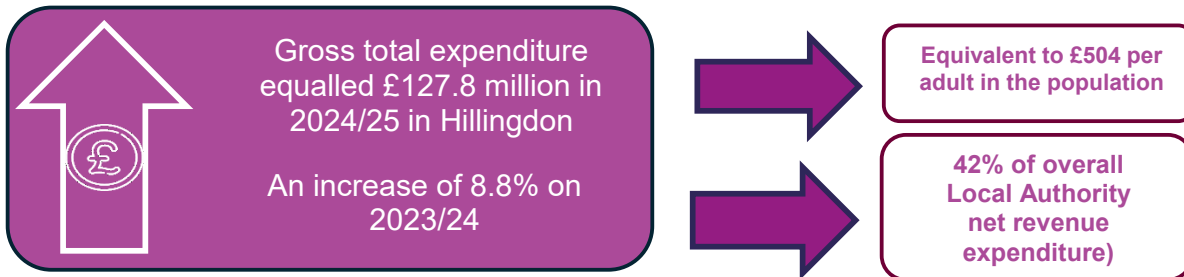


Satisfaction levels and feelings of safety have remained consistent over time, despite the additional pressures services are facing.

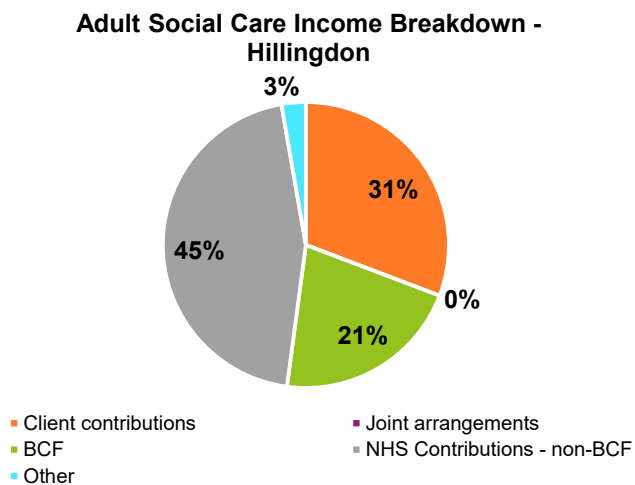
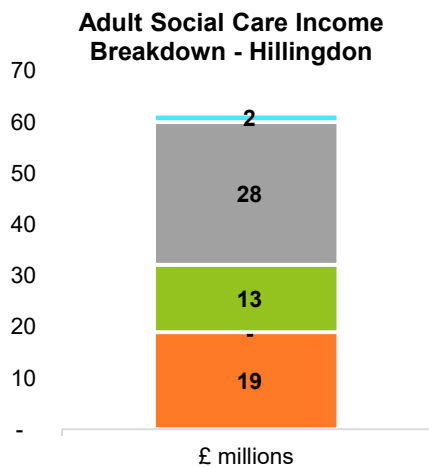
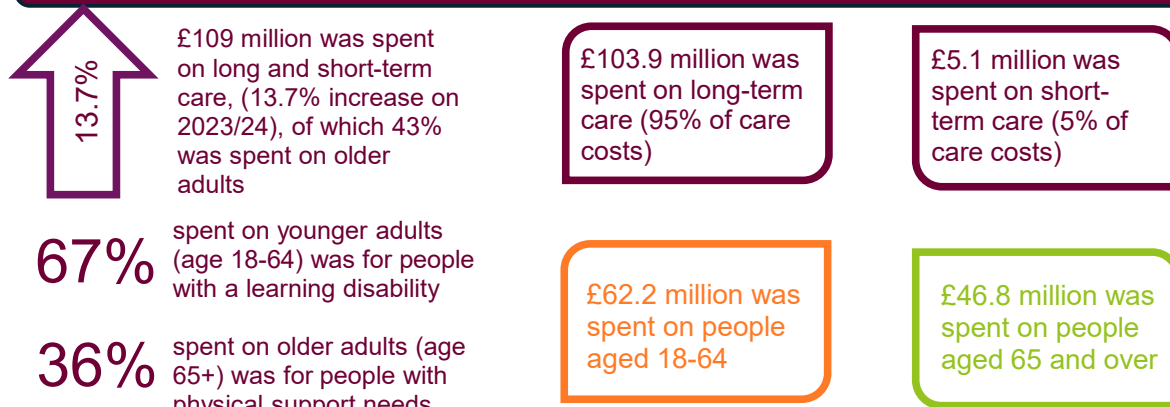
Felt care and support services help them feel safe
Satisfied with the care and support they receive



Finance



Long and short term care costs



Workforce

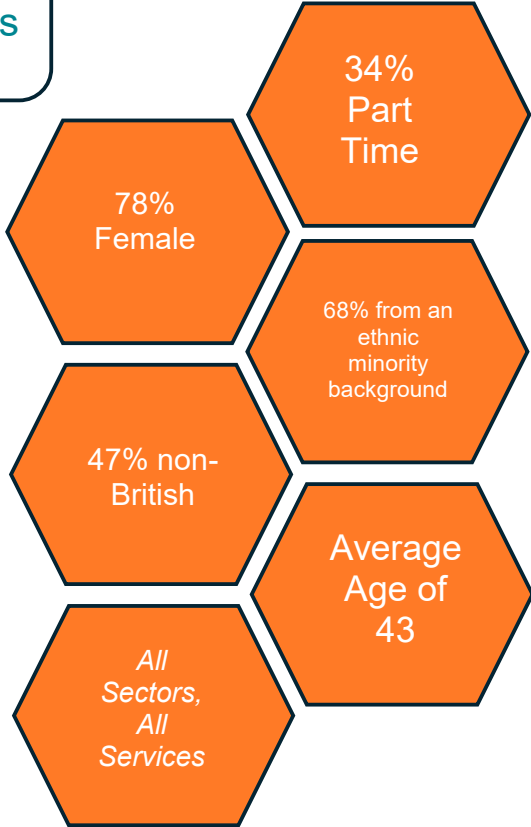
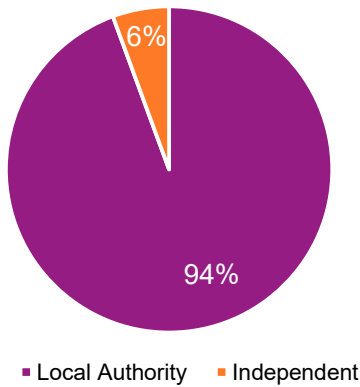
Adult social care employees in the independent and local authority sectors

The ASC sector in Hillingdon has 4,800 employees

Adult social care contributed an estimated **£77.8 billion** to the economy in England in 2024/25



Breakdown of Filled Posts by Sector - Hillingdon



80% direct care
5,000 posts in a direct care role

8% managerial
475 posts in a managerial role

3% regulated professionals
200 Registered nurses, Social workers, Occupational therapists

9% other roles
550 Administrators, HR, Finance and Training roles

Unpaid carer support is estimated to be worth **£152 billion** per year in England



Adults receiving social care

Average social care-related quality of life score

All adults in Hillingdon



18 to 64



19.9

out of 24

65+



18.4

out of 24

Amongst all adults using services in Hillingdon, 73.4% feel safe

In Hillingdon, 75.2% of people feel they have control over their daily life

Care homes and carers

In Hillingdon, 90.7% of care homes are rated as good or outstanding by the CQC



In Hillingdon, 590 carers are supported by the local authority

This is a decrease of 0.0% on the previous year

Average quality of life score amongst carers



Carers aged over 65



Page intentionally blank